



ICE KROSS

2021

An Adventure by

xplo^rearth

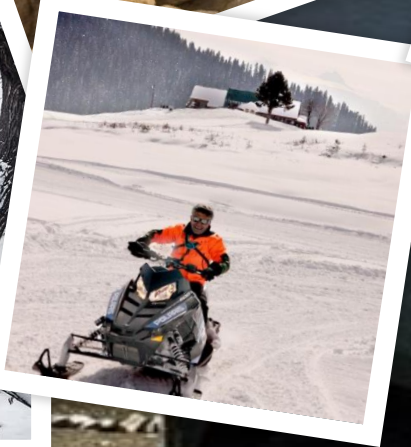
ICE CROSS

2021

Event Dates: FEB 21-27 2022

ELIGIBILITY : SUV
MOTO

ALL 4X4's
ALL ADVENTURE
MOTORCYCLES



LEARN 4X4 SNOWCRAFT AND ICE SURVIVAL SKILLS IN MINUS 25 DEG CELSIUS!!

THE ULTIMATE MOTO ADVENTURE – SPITI IN WINTERS – ICE RIDING - HOW TO SURVIVE ARCTIC CONDITIONS –

LEARN FROM THE BEST MOTO-ADV INSTRUCTORS – MOUNTAIN BORN AND BRED!

Powered by
xplorearth

No Guarantees



You are embarking on an Xtreme expedition which is attempting to traverse the Himalayas in winter! No guesses as to who normally wins this round.

The mountains, ofcourse.

We will set off with a prayer and suitable preparation, but the weather can play truant and spoilsport all at once. Be prepared for delays caused by snowfall, avalanches, glacier movement, roadblocks, vehicle breakdowns- just about anything!

This may delay our progress by a day or so, or in worse conditions, maybe even more! Keep a day or two free for this - just in case force majeure kicks in!



Xpedition -Prep



4X4 Vehicle Scrutiny

All 4X4's will carry items on the Scrutiny List mandatorily. Will be provided once you have registered. Will include Survival and Recovery items. List of clothing/ medication/ Food/ Fuel supplies to be followed STRICTLY

Vitals like BP/SP02 will be checked daily

Moto Scrutiny

Full Cold Weather and Rain Gear mandatory.

Snow chains can be hired.

A Trained mechanic will be on call in case the bike faces any issues which may be addressed during or at the end of the day!

Ride will be luggage free for motos as the backup 4X4 will carry it.

Vitals like BP/SP02 will be checked daily

Powered by

xpl^ore^aearth

The Plan



Day 1

The Chill Starts

Riders and Drivers arrive in Shimla and complete all registration formalities while SUV's and Bikes are scrutinized and checked for any issues.

A briefing shall follow in the evening. Vitals will be checked so that we are aware of all those suffering from BP / Diabetes / Asthma etc. extra care needs to be taken incase of the above! Mandatory refuel for an early start next morning. Radios will be fitted to all SUV's for comms.

Dinner at hotel in Shimla.

Day 2

The Hindustan Tibet Road

An early-ish start is recommended. Departure after breakfast onto the NH leading to Narkanda and then to **Kalpa**.

Lunch at the dhaba at Badhal – Kinnauri Rajma Chawal drowned in desi ghee!

A mandatory refuel at Powari and the first real night at subzero temperatures. Last place for a hot shower for the next few days!

We sleep at 9500 ft to begin the acclimatization process.

230 kms – 9am / 4 pm

Day 3

The Mountain Trail

The run to Kaza will be after breakfast and go through Spillo, Nako and Tabo.

Normally, icy sections of the road will start at Nako, the shady parts of the road usually being fraught with black ice!

The motos will have to deal with extremely cold temperatures, slippery roads that have started freezing and the effects of high altitude.

Some may even question their decision to be here!

220 kms – 9am / 4 pm

Day 4

Snow Leopard Country

We leave Kaza for the higher reaches and depending on the snow pack, clear roads, health of the group etc, set out at about 10am.

The SUV's have been running all night in order to keep the diesel from freezing so a quick refuel is always a good idea!

Snow Chain usage, tyre pressures, snatch strap rescue and lastly winch training will be imparted apart from experiencing the best view in the world!

60 kms – 10am / 3 pm

Powered by

xploreearth



Day 5

The Pin Valley

We begin the adventure as soon as we have thawed out and can leave, taking a detour to the Pin Valley.

Today the bikes will have their training session on dealing with snow and ice. The 'learnings' from 3 days of riding in adverse weather will begin to pay off. Putting on snow chains and removing them will take no time. Practice will make perfect. We double back from Pin and onto Kalpa for the night. Hot showers again!

240 kms – 9am / 5 pm

Day 6

The Run Back

A lazy start is recommended after a relaxed breakfast.

Departure by 9:30 am onto the NH leading to Narkanda and then to Shimla.

If we are making good time we should be in our hotel by early evening.

A closing ceremony, with certificates to take home should conclude what, normally, has been an epic trip.

230 kms – 9am / 4 pm

Powered by

xploreearth

Inclusions
Exclusions
Gear
Pricing

01

What is included

6 Nights on Twin occupancy
Breakfast and Dinner at the hotel/ homestay for 6 days.

Lunch on the Ride for 5 days
Sticker set. (3 pcs)

4X4 Backup with recovery capability
Trained mechanic with tools and essential spares

VHF Radio communication
Medical Kit and First aid capability
Portable Oxygen Chamber for AMS

MOTOS
Experienced Ride Leaders

Training on riding dirt, slush, ice and snow, wet surfaces.

02

What is NOT included

Alcohol and Snacks
Tips and gratuities
Medical Bills
Anything not mentioned in the Inclusions

MOTO ATGATT Gear Policy
Full Adventure Gear required.
Full Rain Gear necessary.
Warm Jacket recommended

What it Costs

INR 49,000 PER PAX



Force Majeure Refunds

01

Force Majeure 1

In the event that the drive / ride is abandoned during its run due to force majeure or any other natural occurrence such that may block the progress of the event, the cost of the event will remain unchanged.

If the tour is extended through waiting for progress to be restored, the additional cost will be borne by the participants.

If motorcycles are left behind at any point on the route due to a force majeure blockage / breakdown of the motorcycle/s the entire cost of recovery will be borne by the Rider.

02

Force Majeure 2

There is no time frame guaranteed (though every attempt will be made to hasten it) for this recovery.

In the event that vehicles / crew who may fall sick or are injured are transported back to the nearest city, the cost of the vehicle (taxi/ Ambulance/ Utility will be borne by the Rider).

Full support for arrangement of these facilities will be provided by Xplore at all times, but not of payment for the services arranged

Refunds

In case you cannot start the Ice Kross, the cancellation fees will be as follows:

Intimation provided before 14 days prior to start of the event – **100% REFUND.**

Intimation provided between 14 - 7 days prior to start of the ride – **50% REFUND.**

Any intimation provided less than 7 days prior to the start of the event, including / or premature departure during the event itself, shall warrant **NO REFUND.**



Powered by

xplo^rearth



Xplorearth

Motoworld,
Navbahar,
Shimla 171002 H.P

Contact:

Vijay Parmar

Mob: 9816004137

Whatsapp: 9418031370

Email

sanaparmar@gmail.com

Arjun Parmar

Mob: 9769144072

Email arjun@xplorearth.in

Powered by

xplorearth